

EATING & DRINKING

CORPORATIVE GIFT 2023-24, CATALOGUE

Water Bottles & Flasks

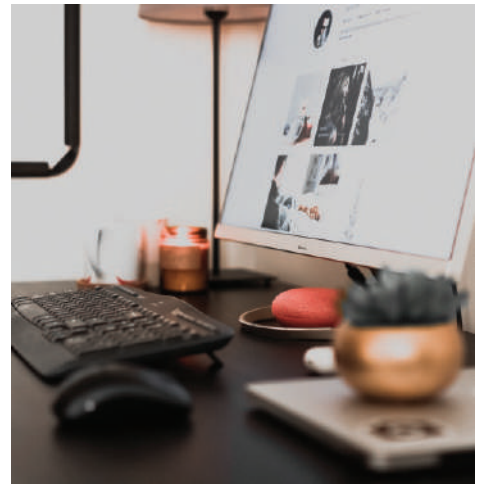
Mugs & Tumblers

Lunch Boxes & Cutlery

Coasters

Chocolates & Mints





Shinu



Stainless Steel Bottle with Bamboo Lid

Shinu is a reliable water bottle option that is perfect for those who care about the environment. Made of stainless steel and designed with two walls, it's leakproof and able to maintain hot liquids for 8 hours and cold liquids for 24 hours. It has a capacity of 560ml.

Colors - ● ● ● ● ● ● ● ●

- 560 ML
- Sustainable
- Double Wall
- 24 Hours Cold, 8 Hours Hot





Haba



Stainless Steel Mug with Bamboo Lid

With its dual-wall structure, durable materials, and leak-proof design, the Haba coffee mug is a reliable and eco-friendly option. This stainless steel mug can keep hot beverages hot for up to 5 hours and cold beverages chilled for up to 15 hours. It fits comfortably in most coffee machines and can hold 300ml of fluid.

Colors - ● ● ● ● ● ● ● ●

- 300 ML
- Sustainable

- Double Wall
- 15 Hours Cold, 5 Hours Hot





Calypso Flask



Double Wall Vacuum Flask

The Calypso bottle features a sleek design, has a 500ml capacity and is made out of 304 stainless steel with double-walled construction to keep liquids hot for 12 hours and cold for 24 hours.

Colors - ●

- 500 ML
- Geometric Design
- Double Wall
- 12 Hours Hot, 24 Hours Cold



Calypso Tumbler



Double Wall Vacuum Tumbler

The Calypso tumbler has a sleek, unique design, a 330ml capacity, and is made from 304 stainless steel with double walled construction.

Colors - ●

- 330 ML
- Geometric Design
- Double Wall
- 8 Hours Hot, 16 Hours Cold





Steba

Vacuum Bottle with Loop



Steba is a stainless steel water bottle with thermal insulation that keeps cold drinks cold for 24 hours and hot drinks hot for 8 hours. It is designed with a double wall and has a carry handle to prevent leaks.

Colors - ●●●●

- 600 ML
- Sustainable

- Easy Carrying
- 8 Hours Hot, 24 Hours Cold



Aiwa



Stainless Steel Tumbler with Metal Straw

The Aiwa stainless steel tumbler is a trendy yet functional gift that comes with a reusable metal straw, is double-walled and leakproof, keeps drinks hot or cold for hours, is eco-friendly, and comes in attractive packaging suitable for clients.

Colors - ● ○

- Elegant
- Trendy
- Leakproof
- Reusable metal Straw



Contempo



Recycled Stainless Steel Water Bottle

The Contempo Recycled Stainless Steel Water Bottle is a 22oz sustainable bottle made from 83% recycled stainless steel and includes a leak-proof cork lid with carry handle.

Colors - ● ○

- RCS-Certified
- Sustainable
- Insulated
- Leak-proof



Calypso Tumbler Pro



Double Wall Tumbler

The Calypso Tumbler Pro is a recycled stainless steel double wall geometric mug suitable for both hot and cold drinks.

Colors - ● ● ● ● ● ●

- Hot/cold
- Geometric Shape
- Recycled Stainless Steel

Calypso Flask Pro

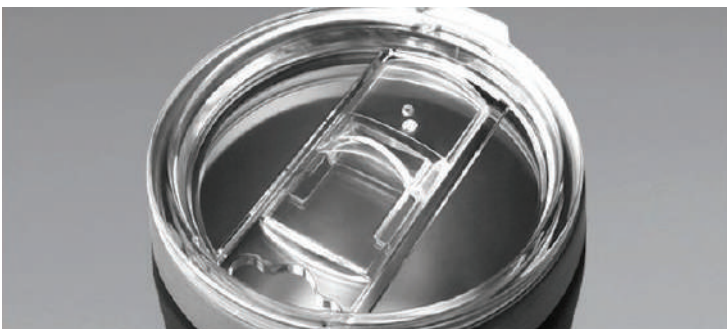


Double Wall Flask

The Calypso Flask Pro is a flask made from recycled stainless steel, with a dual wall, rotating ergonomic handle and geometric shape that can keep hot and cold liquid for up to 18 hours.

Colors - ● ● ● ● ● ●

- Ergonomic Design
- Hot/Cold
- Recycled Stainless Steel





Burno

Double Wall Stainless Steel Water Bottle



The Burno Double Wall Stainless Steel Water Bottle is a 500ml, vacuum insulated bottle made of stainless steel that maintains the drink's temperature for up to 6-12 hours, with a unique coating and a leak-proof design.

Colors - ● ● ● ● ● ● ● ●

- Leakproof
- Hot/Cold
- Unique
- Insulated



Aguavida

Glass Tumbler with Recycled Sleeve



The Aguavida Glass Tumbler is a 16oz reusable glass cup with a recycled polypropylene sleeve that is detachable and can be properly washed and recycled, making it a sustainable option.

Colors - ● ●

- Premium Borosilicate
- RCS- certified
- Heat resistant
- Sustainable

Ripple

Ceramic Tumbler with Recycled Sleeve



The Ripple Ceramic Tumbler is an environmentally friendly drinkware option, made of recycled materials and designed to be easily cleaned and recycled after use.

Colors - ● ●

- Premium Ceramic
- RCS-Certified
- Detachable
- Insulated





Circular

Cup 12oz

Circular Cup 12oz is a durable, 100% leakproof, and 100% recyclable travel mug made from 6 recycled single-use paper cups, designed for 10 years of use, and feature a push lid mechanism that minimizes spills and offers one-hand opening.

Colors - ● ● ● ● ● ●

- Reusable
- Leakproof
- Unique



Circular

Cup 8oz

Circular Cup 8oz are the first reusable coffee cups made from recycled materials and designed for 10 years of use, with a unique push lid mechanism and 360-degree drinking, contributing to a circular economy for coffee cups.

Colors - ● ● ● ● ● ●

- Reusable
- Leakproof
- Unique





Trabby

Double Wall Stainless Steel Bottle with Bamboo Lid and Base



The Trabby flask has an added touch of elegance with its bamboo lid and bottom feature. It is designed with double wall vacuum insulation that can keep your drink hot for up to 5 hours and cold for up to 15 hours. It can hold up to 520ml

Colors - ● ● ● ●

- 520 ML
- Double Wall
- Eco Friendly
- 5 Hours Hot, 15 Hours Cold



Sunrox

Stainless Steel Water Bottle



With the Sunrox classic insulated stainless steel water bottle, your cold drinks stay cold for up to 10 hours, and hot beverages stay warm for up to 5 hours. It's the ideal on-the-go hydration solution with a 500ml capacity and a leakproof design.

Colors - ● ● ● ●

- 500 ML
- Double Wall
- Eco Friendly
- Classic Design



Libon

Stainless Steel Tumbler with Cork Base



The Libon vacuum insulated coffee mug has unique cork detail, keeps drinks hot for 5 hours and cold for 15 hours, and has a 180ml capacity.

Colors - ● ● ● ● ● ● ● ●

- 180 ML
- Fits Coffee Machines
- Double Wall
- 5 Hours Hot, 15 Hours Cold



Trigaro

Set of Flask and Tumbler



The Trigaro Flask and Tumbler Gift Set is a versatile and high-quality stainless steel insulated water bottle flask and coffee tumbler series with a stylish cork base, perfect for all occasions and keeping cold drinks cool and hot drinks warm.

Colors - ● ●

- Flask 600 ML
- Gift Box
- Tumbler 180 ML
- Cork Design



Kivera

Stainless Steel Mug with Cork Base

Stainless steel travel coffee mug designed with a cork base, featuring a double-walled vacuum insulation. Can hold 480ml of liquid.



Colors - ● ●

480 ML

Double Wall

Sustainable

Tall Mug



Malave

Stainless Steel Mug with Cork Base

A water bottle made of stainless steel that is double insulated and comes with a handle and base made from cork. The bottle can accommodate 500ml of liquid.



Colors - ● ●

500 ML

Double Wall

Sustainable

Carry Handle



Krush



Stainless Steel Water Bottle with Bamboo Base

The Krush-Stainless Steel Water Bottle with Bamboo Base is a sustainable and durable water bottle with added elegance, including a natural-looking bamboo base, making it perfect for carrying hot and cold drinks, and an ideal gift item with branding options.

Colors - ●

- Elegance
- Cold/Hot
- Sustainable
- Bamboo



Freya



Double Wall Stainless Steel Water Bottle

The Freya Double Wall Stainless Steel Water Bottle is a high-quality water bottle with a black plastic coated body and PP black lid, featuring a bamboo accessory and black silicone handle.

Colors - ●

- High-quality
- Double wall
- Bamboo accessory



Kukuri



Double Wall Bamboo Flask

Kukuri is an eco-friendly and stylish double-walled bamboo flask that provides exceptional insulation and comes with a tea infuser, making it perfect for corporate gifting and event giveaways.

Colors - ●

- Eco-friendly
- Bamboo
- Stylish





Vidur



Glass Bottle with Bamboo Lid and Sleeve

The product is a water bottle made of clear glass and comes with an eco-sleeve and bamboo lid, with a capacity of 33 ounces.

Colors - ●

- Sleeve
- Eco Friendly
- Glass/Bamboo



Tesoro



Glass Bottle with Cork Sleeve and Bamboo Lid

The Tesoro, a glass bottle with a cork sleeve and bamboo lid, can serve as an example that corporate gifting can be unique and practical.

Colors - ●

- Borosilicate Glass
- Hot/Cold
- Sustainable



Savore



Glass Bottle with Sleeve

The glass bottle with sleeve and bamboo cap is an eco-friendly, versatile, and portable product that can be used for tea and corporate giveaways and promotions.

Colors - ●

- Translucent Glass
- Long lasting
- Sustainable
- Lightweight



Bokalovi

Ceramic Mug with Cork Base

The coffee mugs have a unique combination of ceramic and cork materials, making them fashionable, distinctive, and environmentally responsible.



Colors - ● ●

- 385 ML
- Eco Friendly
- Sublimation
- Premium Ceramic



Guzel

Glass Mug with Bamboo Lid

Guzel is a glass mug with a bamboo lid that is environmentally friendly, with a capacity of 325ML.



Colors - ●

- 325 ML
- Eco Friendly
- Bamboo
- Premium Glass



Livra

Double Wall Glass Bottle with Bamboo Lid

Double wall in high borosilicate glass bottle and bamboo lid with tea infuser.



Colors - ●

- 500 ML
- Eco Friendly
- Double Wall
- Premium Glass



Blakka

Double Wall Glass Mug with Bamboo Lid

Double wall high borosilicate glass with bamboo lid with silicone ring.



Colors - ●

- 350 ML
- Eco Friendly
- Double Wall
- Premium Glass



Jivago

Wheatstraw Mugs



Jivago is an eco-friendly and reusable 350ml coffee mug with a silicone grip that is dishwasher safe and comes packed in a kraft paper gift box.

Colors - ●●●●●●

- 350 ML
- Dishwasher Safe
- Eco Friendly
- Wheat Straw



Uva

Espresso Cup with Cork Base



The product is a 140 ml espresso cup made of stoneware with a cork base and is packaged in a Kraft paper box.

Colors - ●●

- 140 ML
- Espresso
- Eco Friendly
- Sublimation (White)



Ocean Bottle - Brew

Satinless Steel Water Bottle

Ocean Bottle BREW keeps cold drinks cold, and hot drinks hot. Made from double wall vacuum-insulated stainless steel and recycled content. The anti-leak dual opening lid makes filling and cleaning a breeze. Plus, unlike most reusable bottles, Ocean Bottle is 100% dishwasher safe.

Colors - ●●●●●●●●

- 350 ML
- Sustainable
- Dishwasher Safe
- Leak Proof





Ocean Bottle

Sustainable Stainless Steel Water Bottle

The Ocean Bottle is designed to maintain the temperature of cold and hot beverages efficiently. It features a double wall vacuum-insulated stainless steel construction and recycled content. Its anti-leak dual opening lid simplifies the process of filling and cleaning. Additionally, the Ocean Bottle is unique, as it's fully dishwasher safe, unlike other reusable bottles.

Colors -

- 500 ML
- Sustainable
- Dishwasher Safe
- Leak Proof





Totoshi

Copper Insulated Stainless Steel Bottle



This bottle has a copper-insulated vacuum design with two walls made of stainless steel. It can hold up to 500 ml and is leak-proof. It's a great option for keeping your preferred drink hot for 12 hours or cold for 20 hours whenever you're on the go. It comes in eight different lively colors.

Colors - ● ● ● ● ● ● ● ●

- 500 ML
- Dual Copper
- Leak Proof
- 12 Hours Hot, 20 Hours Cold





Pinda



Satainless Steel Water Bottle

Stay hydrated and keep your drinks at the ideal temperature with the Pinda water bottle. This sturdy, leak-proof bottle is constructed from premium SS304 stainless steel both inside and out, with a 500ml capacity and the ability to keep beverages hot for 8 hours or cold for 24 hours.

Colors - ● ● ● ●

- 500 ML
- Sustainable

- Leak Proof
- 8 Hours Hot, 24 Hours Cold



Maglipli

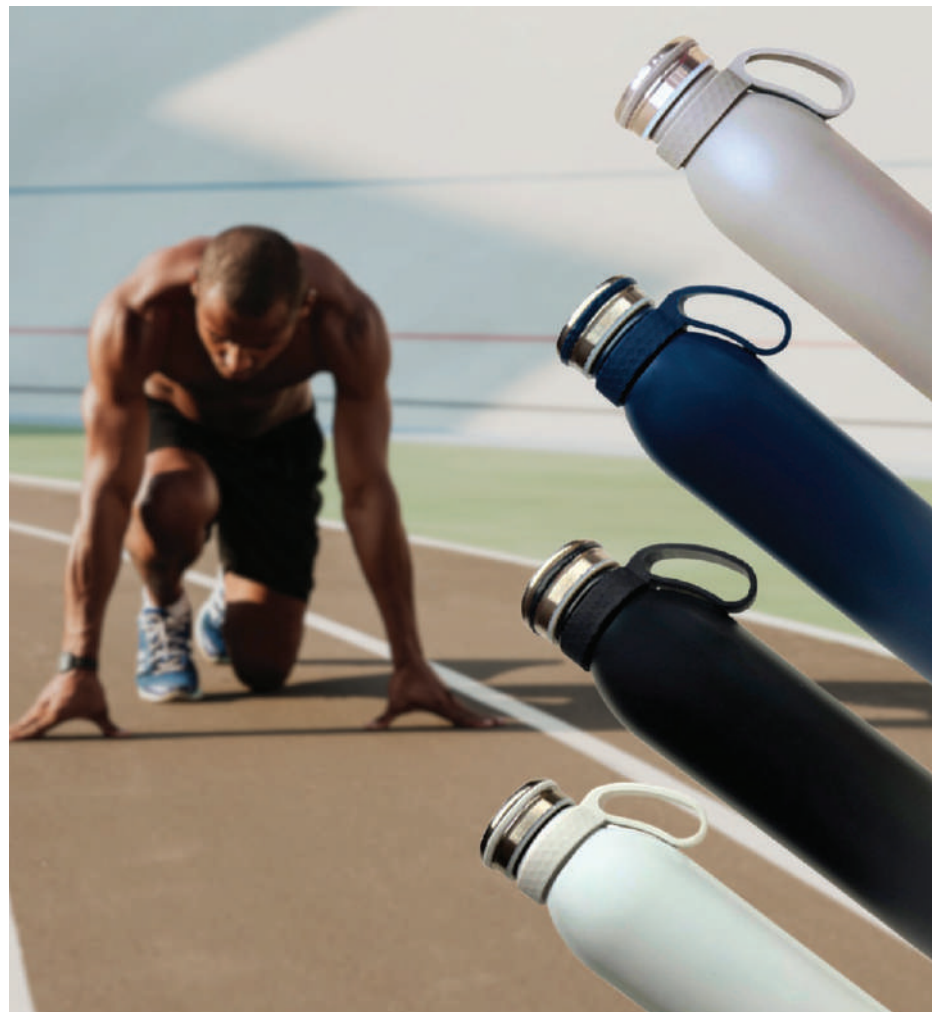


Double Wall Flask Water Bottle

The Maglipli is our premium double-walled flask bottle made from spray paint-coated 201 stainless steel and 304 stainless steel inside. The outer surface has a small handle for easy carrying. The Maglipli has a 600 ml capacity, comes in four colors, and can keep liquids 5 hours hot or cold for 12 hours.

Colors - ● ● ● ● ●

- 600 ML
- Eco Friendly
- Easy Carrying
- 5 Hours Hot, 12 Hours Cold





Olimba

Stainless Steel Water Bottle

If you want a reusable water bottle that can keep your beverages hot or cold for hours and won't cause any condensation on the outside, Olimba is the perfect choice for you. With its double-walled vacuum stainless steel construction and a capacity of 450ml, it's the only bottle you'll need.

Colors -

- 450 ML
- BPA Free

- Wide Mouth
- 8 Hours Hot, 12 Hours Cold



Zuhalter



Stainless Steel Water Bottle with Temperature Lid

The Zuhalter stainless steel water bottle is a great corporate gift with a unique temperature lid, BPA-free material, leakproof, keeps beverages hot and cold for up to 12 hours, and comes in a white gift box, ideal for branding using screen, UV printing, and laser engraving.

Colors - ● ● ● ●

- Unique
- Temperature Display
- BPA Free
- Leakproof



Climbix



Stainless Steel Flask

The Climbix is a 500ml flask with double-walled insulation and a temperature display that keeps drinks hot for 8 hours and cold for 12 hours, available in four colors with custom printing options.

Colors - ● ● ● ●

- Double wall
- Stylish
- Temperature Display



Balade

Drinkware Set



This double vacuum insulated travel cup made of high-quality materials can keep liquids hot or cold for 12 hours and comes with a multi-function cup cover for spill-free pouring. It is made of durable food grade 304 stainless steel and is suitable for daily use on travel, hikes or at school or work.

Colors - ● ● ●

- 500 ML
- Gift Set

- Leak Proof
- 8 Hours Hot, 12 Hours Cold





Wizora

Double Wall Suction Mug

Wizora is a double wall suction mug that won't tip over if you accidentally bump into it, but lifts straight up just like any other mug.

Colors - ● ● ● ● ●

- 500 ML
- Easy to Carry
- High Quality
- S/S Inside, ABS Outside

Stuve

Never Fall Mug

The 470 ml Double walled suction tumbler mug is designed to securely hold to the surface to prevent spills and keep drinks at the desired temperature.

Colors - ● ● ● ● ●

- 470 ML
- Leak Proof
- BPA Free
- S/S Inside, ABS Outside



Gusty

Glass Bottle with Handle and Sleeve



The Gusty bottle is made of borosilicate glass and comes with a bamboo lid and handle, as well as a colored sleeve, with a capacity of 500ml.

Colors - ● ● ● ● ●

- 500 ML
- Borosilicate Glass
- Handle
- Eco Friendly



Loxo

Glass Bottle with Sleeve

Opt for the eco-friendly and safe Loxo water bottle that is constructed with BPA and lead-free components, ensuring that you have nothing to worry about. Utilizing top-grade borosilicate glass, it can withstand high temperatures like no other commonly used glass. Its stylish protective cover serves as both a barrier to drops and an insulation layer, and it can hold up to 500 ml of liquid.

Colors - ●

- 500 ML
- Borosilicate Glass
- Sleeve
- Eco Friendly



Vozly

Wheat Straw Glass Bottle



The Vozly water bottle is an eco-conscious choice for drinkers, boasting a glass interior and wheat straw exterior. Handy for taking on the go, it has a handle and doubles as a phone stand.

Colors - ●

- 380 ML
- BPA Free
- Phone Stand
- Eco Friendly



Kone

Anti-Microbial Coffee Tumbler

In a world where safety has become paramount, Kone is a unique antimicrobial coffee tumbler that is not just aesthetically stylish but protected with Biomaster that protects from harmful bacteria.

Colors - ● ● ●

- 250 ML
- Universal Design
- Anti-Microbial
- BPA Free



Kaani

Double Wall Stainless Steel Mug



This slim mug can hold up to 300ml and is made from durable 304 stainless steel on both the inside and outside. Additionally, it comes with a plastic lid for convenience.

Colors - ● ● ● ●

- 300 ML
- Double Wall
- Elegant Design
- 304 Stainless Steel



Mokka

U Shaped Ceramic Mug

The Mokka U Shaped Ceramic Mug is a 12oz mug that comes in a matching gift box.

Colors - ● ● ● ● ● ● ● ●

- Ideal for gift
- Affordable
- U Shape



Agora

Double Wall Stainless Steel Cup



The Agora Double Wall Stainless Steel Cup keeps beverages warm for hours and is an easy-to-carry tumbler, making it perfect for on-the-go coffee drinkers.

Colors - ● ● ● ● ● ● ● ●

- Insulated
- Stainless steel
- Matt
- Convenient





Warmo



Wireless Charger & Mug Warmer Set
 The Temperature Control Smart Mug Warmer and Wireless Charger is a safe and convenient office gift that keeps your drinks at a constant temperature while recognizing foreign objects and maintaining a waterproof and touch-safe surface.

- Colors - Black White
- 350 ML
- 10W Wireless Charging
- Ceramic Body
- Constant Temperature 55C



Tawaka



Bamboo 10W Wireless Charger with Mug Warmer
 The Tawaka Bamboo Wireless Charger with a Mug Warmer is a versatile device that allows for wireless charging of electronic devices and keeping beverages at a consistent temperature.

- Colors - Bamboo Black
- 55C
- 10W Wireless Charging
- Mug Warmer
- Bamboo





Sopra



Espresso Cups Set

This is a set of two stainless steel 80ml espresso cups that are sturdy and smooth, unbreakable and safe for long-term use, non-rusting, lightweight, and 100% recyclable with a double wall design to keep drinks hot or cold for hours.

Colors - ● ● ●

- 80 ML
- Double Wall
- Non Rusting
- Gift Set



Bibilo



Kahwa Cups Set

These double walled stainless steel Arabian coffee cups provide long-lasting thermal insulation and hold 90ml of liquid, perfect for enjoying traditional Arabic tea or coffee on-the-go.

Colors - ● ●

- 90 ML
- Double Wall
- Arabian Souvenir
- Gift Set





Bekara

Gahwa Set

Treat yourself to the traditional Arabic coffee experience with our Bekara Gahwa Set! Enjoy the bold and unique taste of your coffee whenever the cravings strike.



Colors - ●

400 ML Flask

80 ML Cups

Gift Set

8 Hours Hot, 12 Hours Cold



Ritmo

Espresso Cup Set with Bamboo Coaster

A set of 2 elegant espresso coffee cups with bamboo coasters are double-walled, vacuum insulated, made from borosilicate glass, and have a 90ml capacity, all packed in a gift box.

Colors - ●

90 ML

Eco Friendly

Gift Set

Double Wall



Porto

Glass Bottle with Neoprene Sleeve

The Porto Glass Bottle with Neoprene Sleeve has a 500 ml water capacity and is a beautiful and durable promotional sports bottle with a stainless steel lid and colorful sleeve, perfect for promoting a business or brand during events, conferences, and campaigns.

Colors -

- Durable
- Long Lasting
- Lightweight

Alpine

Aluminium Sports Bottle

The Alpine Aluminium Sports Bottle is a durable and fashionable sports bottle with a carabineer clasp that is perfect for athletic complexes, fitness centers, and gyms and can be branded with logos for marketing events, featuring a stainless steel lid and colorful sleeve.

Colors -

- Lightweight
- Durable
- Carabiner clasp



Aasma

Tritan Sports Bottle

The Aasma Tritan Sports Bottle is a 650ml capacity water bottle made of durable BPA-free Tritan material.

Colors -

- Durable
- BPA free
- Lightweight



Stikan

Bamboo Fiber Tumbler



The promotional reusable bamboo travel mug is an eco-friendly and lightweight option for people on the go, with a silicone lid, midband for heat resistance and an attractive painted design.

Colors - ● ● ● ● ● ●

- 400 ML
- Eco Friendly
- Silicone Grip
- Dishwasher Safe



Tikva

Wheat Fiber Tumbler



These wheat straw cups are eco-friendly, biodegradable, and come with a silicone sleeve and lid, making them perfect for travel, sports, and other outdoor activities.

Colors - ● ● ● ● ● ●

- 350 ML
- Eco Friendly
- Silicone Grip
- Dishwasher Safe



Halic

Round Bamboo Coasters



Halic round bamboo coasters are elegant and sustainable tableware items that can be printed or engraved, and they come in a canvas pouch for gifting.

Colors - ●

- Premium Bamboo
- Sustainable
- Elegance
- Smooth finish

Valibona

Square Bamboo Coasters



Valibona's square bamboo finish tea coasters are both eco-friendly and stylish, perfect for corporate gifting with ample branding space, providing a sturdy base for drinks and coffee mugs, and adding natural beauty and elegance to home and office decor.

Colors - ●

- Stylish
- Sustainable
- Eco-friendly
- Bamboo



Nolani

Bamboo Coaster Set



The Nolani Bamboo Coaster Set includes 5 round coasters and a holder made of bamboo.

Colors - ●

- 5 pcs
- Bamboo
- Eco-friendly



Taika

Basic White Top Square Coasters

Taika's basic white top square coasters made of cork and with a white top are stylish and durable corporate gifts that can be branded and come in a canvas cotton pouch.

Colors -

- Classy
- Unique
- Durable



Zartan

Square Cork Coasters



The Zartan cork coasters are an eco-friendly and affordable corporate gift option with ample printing and engraving space, providing a stable place for hot and cold beverages at home and the workplace and come with a stylish canvas cotton pouch for individual gifting.

Colors -

- Eco-friendly
- Hot/Cold
- Cork



Hikari

Basic White Top Cork Coasters

Hikari's white top cork coasters are a great choice for corporate gifting, as they are elegant, functional, and have ample space for promotional branding.

Colors -

- Elegance
- Style
- Ideal gift
- Durable



Adira

Round Cork Coasters



Adira Round Cork Coasters are perfect for environmentally conscious and trendy companies and brands as they are made from natural cork, are heat and moisture-resistant, protect surfaces, have a stable and soft texture, can be printed or engraved, and come in a convenient canvas pouch for promotional gifts.

Colors -

- Cork
- Stylish
- Eco-friendly
- Heat/moisture Resistance

Costella

Bottle Opener Coasters

The Costella Bottle Opener Coasters are unique, affordable, functional corporate giveaways made of ABS plastic, ideal for multi-colour branding and come in attractive packaging- perfect for corporate events, trade fairs and as part of a specially curated gift basket.

Colors -

- Unique
- Affordable
- ABS material
- Functional





Sirona

Recycled PU Tray Coasters



The Sirona recycled PU tray coasters are environmentally friendly products made of recycled material that comes with a coaster holder and has a unique grainy texture.

Colors - ● ● ● ● ●

- 6 pcs
- Comes with Tray
- PU material



Kazemi

RPET Felt Coaster with Bamboo Stand



The Kazemi RPET Felt Coaster with Bamboo Stand is a set of 6 fully recyclable coasters made of innovatively manufactured RPET felt and comes with a bamboo stand, presented in an eco kraft gift box.

Colors - ●

- Made with RPET
- 6 pcs
- Comes with Bamboo stand



Rabbit

Stainless Steel Lunch Box with Bamboo Lid



The Rabbit Stainless Steel Lunch Box with Bamboo Lid is a stylish and durable lunch container that features a single-compartment design with a bamboo lid and black elastic band closure.

Colors - ●

- Eco-friendly
- Durable
- Twill Cotton
- Stainless steel/Bamboo

Buchi

Glass Lunch Box with Bamboo Lid



The product is a durable and versatile glass lunch box with a bamboo lid that is plastic-free, BPA-free, and safe for cooking and storage, and comes with a customer satisfaction guarantee.

Colors - ●

- Durable
- Safe
- Glass
- Versatile



Ostra

Wheat and Bamboo Lunch Box



The Ostra Wheat and Bamboo Lunch Box is a sustainable lunch box made from recycled wheat straw material and includes a spoon, fork, and knife stored in a brown elastic band.

Colors - ●

- Recycled Wheat
- Sustainable
- Bamboo